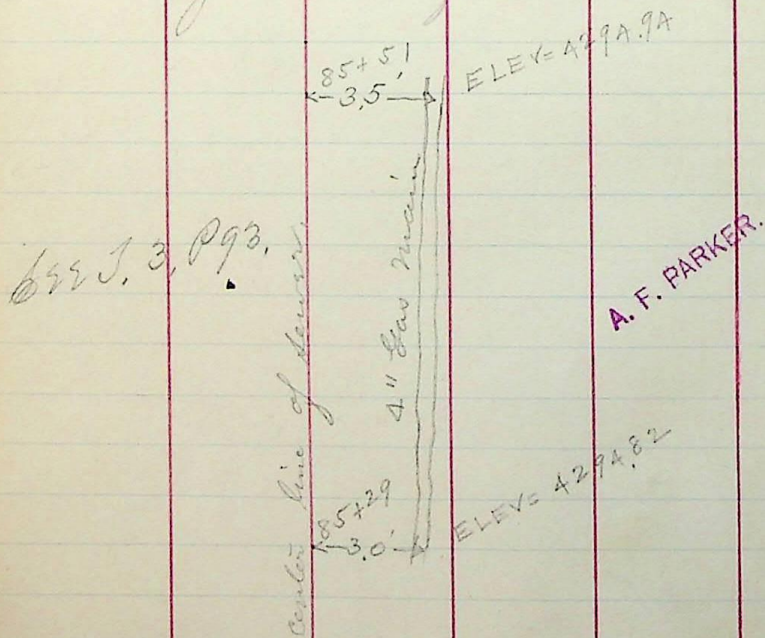


Four stakes and insert grade  
on same on Wall Ave from  
Sta 118+15 to Sta 116+20.

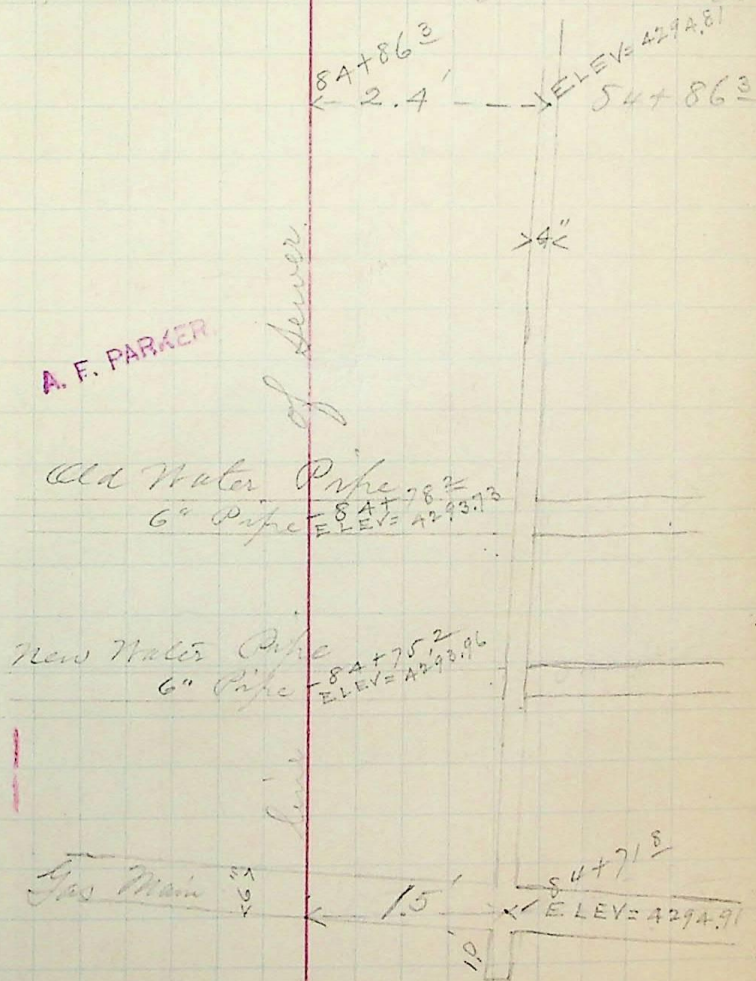
P. M., Nov 20-90

Sketch showing 4" Gas main on  
23<sup>rd</sup> St just East of Lincoln Ave.



See J. 3, P 93.

Sketch showing location of  
Gas Main 23<sup>rd</sup> St. Lincoln Ave.



See J. 3, P 93